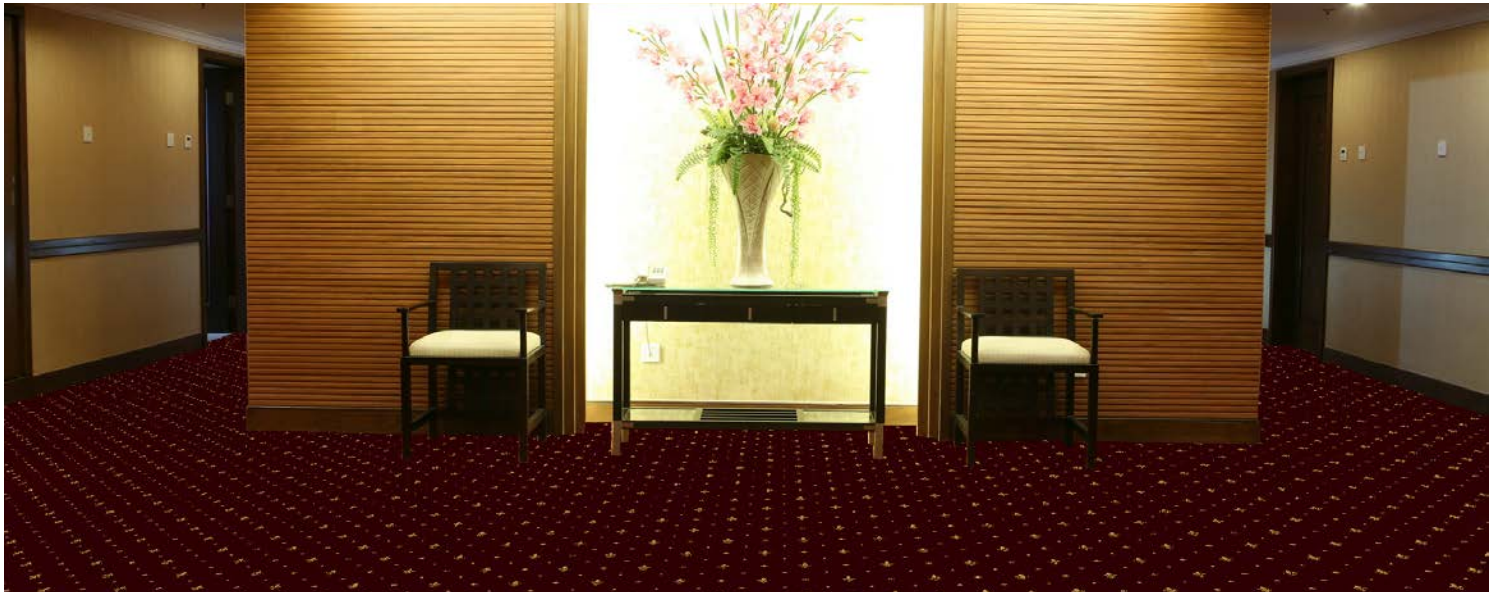


classicaxminster  
**royal lily | palazzo | chateau** 



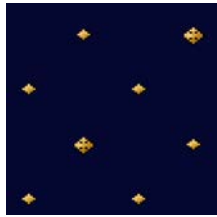
woven carpet  
featuring hard wearing wool blend

innovation & inspiration

| *Signature*<sup>®</sup>  
wovenconcepts



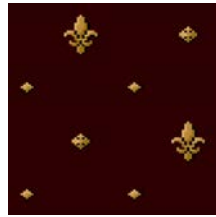
royal lily majestic 79\*



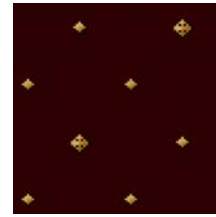
palazzo visconti 79\*



chateau edinburgh 79



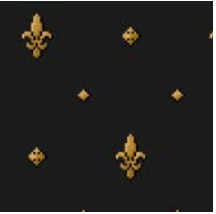
royal lily princess 18\*



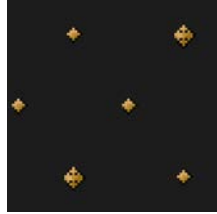
palazzo medici 18\*



chateau windsor 18



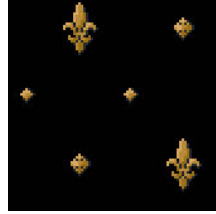
royal lily contessa 99\*



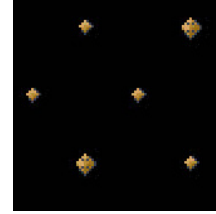
palazzo venetia 99\*



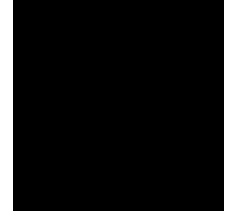
chateau canterbury 99



royal lily harlington 100



palazzo thames 100



chateau richmond 100



chateau essendon 60

**product**  
**construction**  
**yarn/fibre**  
**yarn process**  
**yarn count**  
**pile weight**  
**pile height**  
**width**  
**pitch**  
**rows**  
**backing**  
**traffic**

classic axminster, royal lily & palazzo & chateau  
 woven axminster  
 80% wool (NZ & British wool), 20% nylon (epitropic fibre)  
 woollen spun  
 R667/2  
 1322g/m<sup>2</sup>  
 7mm  
 366cm  
 27.60 /10cm (7 per inch)  
 35.50 /10 cm (9 per inch)  
 polyester, polypropylene, jute, conductive latex  
 heavy duty commercial

**\*pattern match**  
**\*drop match**

30.5cm x 30.5cm  
 15.25cm x 15.25cm

**availability**

in stock

**Traffic**



**Warranty**



**Fire**



**Green**



*Signature*<sup>®</sup>  
 floorconcepts

au 03 9401 0888  
 nz 0800 150 555  
[signaturefloors.com.au](http://signaturefloors.com.au)  
[signaturefloors.co.nz](http://signaturefloors.co.nz)

**contact your sales consultant for specifications**